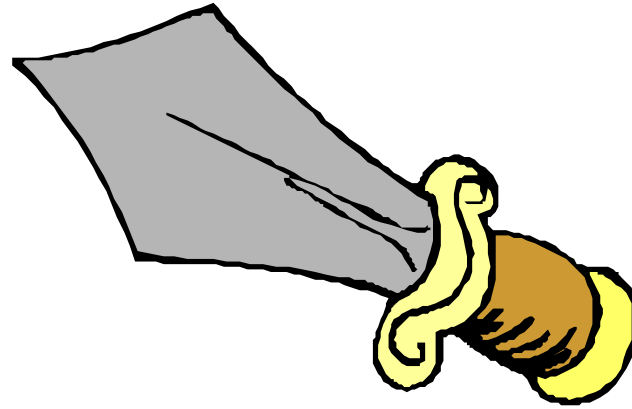


elefante

Lámina 13. Elefante.

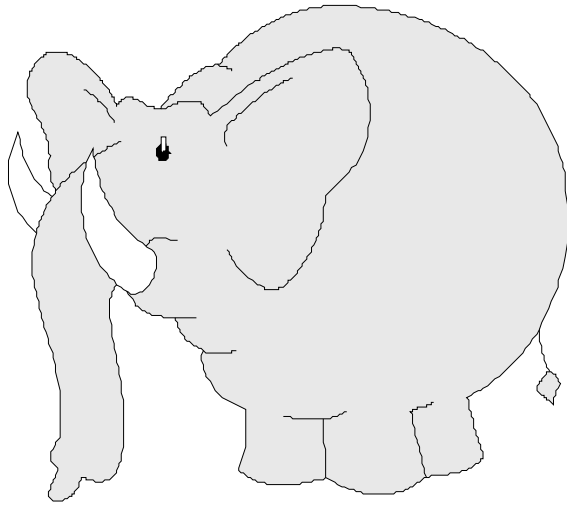
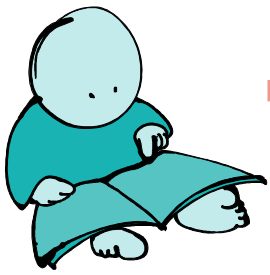
Caracoleando. Ejercicios de refuerzo de la lecto-escritura.



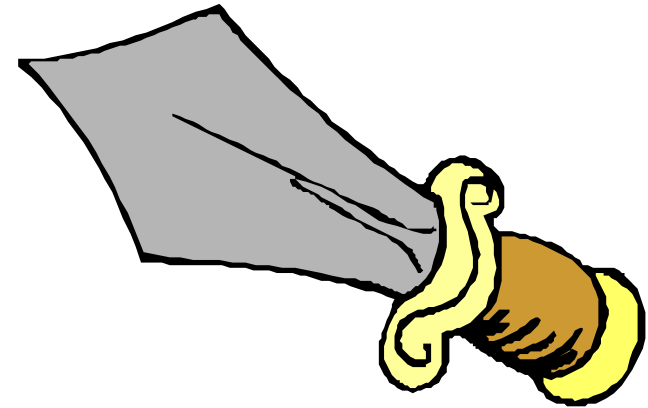
espada

Lámina 14. Espada.

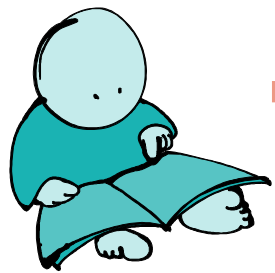
Caracoleando. Ejercicios de refuerzo de la lecto-escritura.



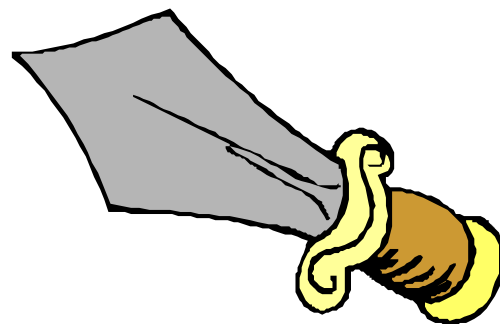
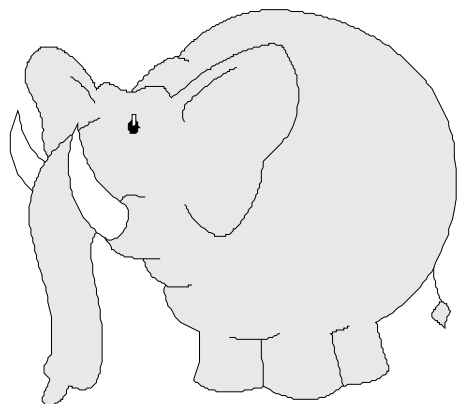
elefante



espada

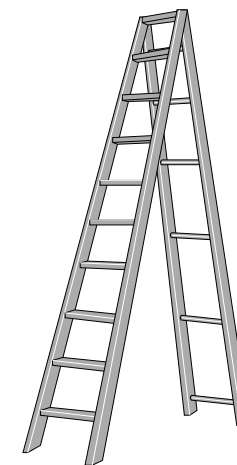


elefante



espada

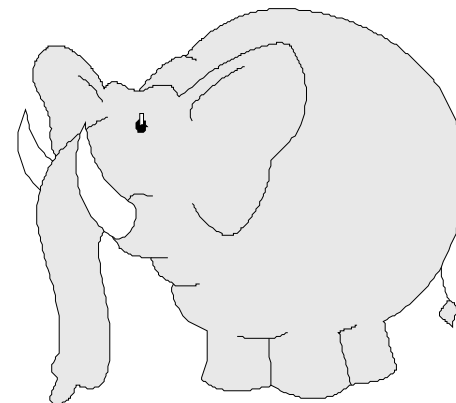
escalera



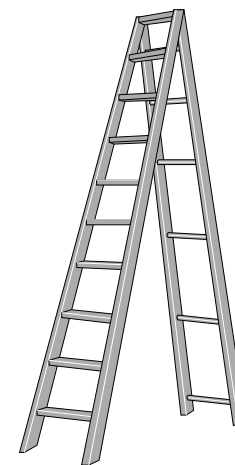
e e u a u e o
a e i e i u e



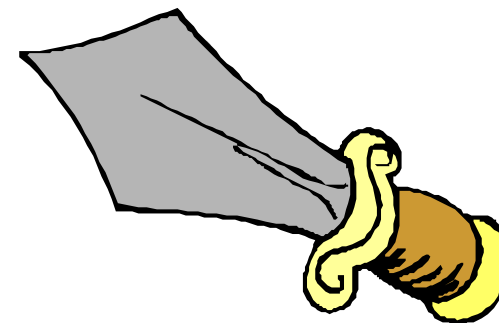
Escalera

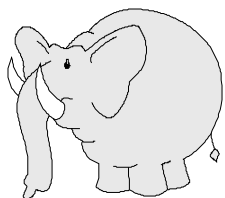
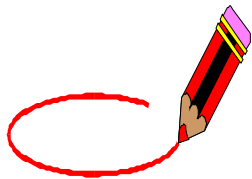


Elefante

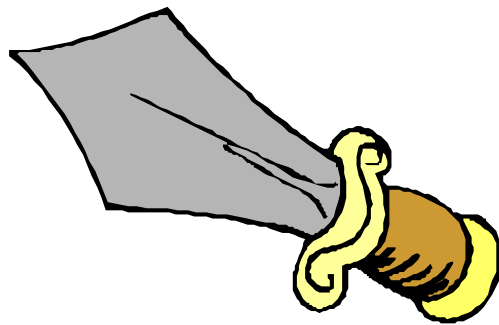
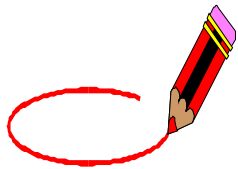
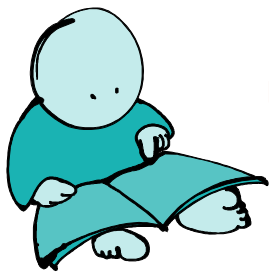


Espada





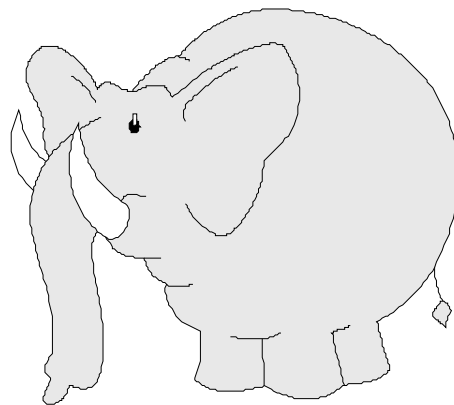
e	i	a	e
e	o	e	a
e	e	e	a
e	e	a	u
a	i	a	e
e	a	e	a



escalera

espada

elefante



araña

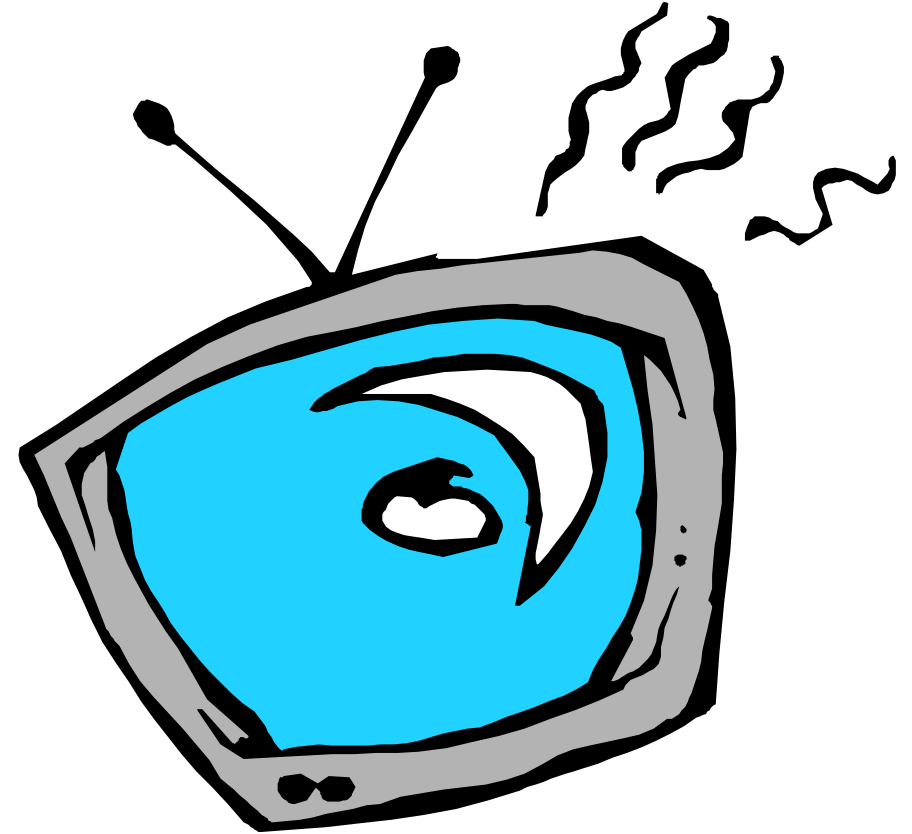
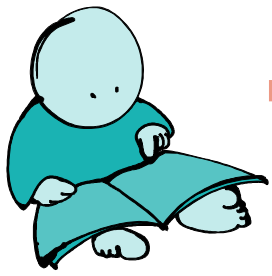
elefante

espada



e e e e e e

E e E e E e



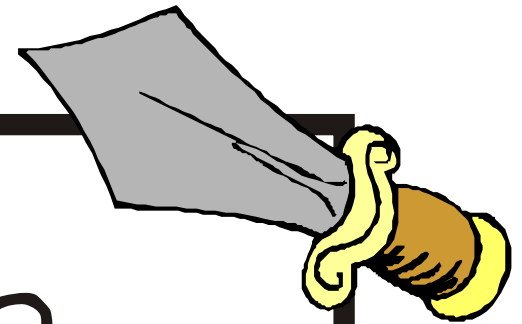
tele

Lámina 15. Tele.

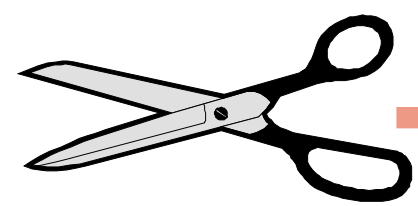
Caracoleando. Ejercicios de refuerzo de la lecto-escritura.



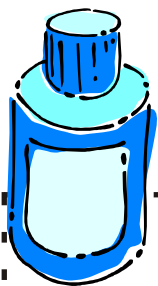
es ca le ra



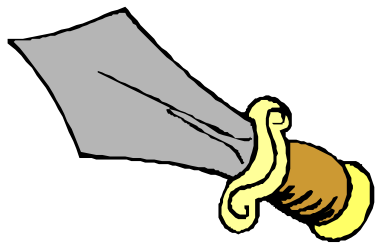
es pa da



esnada



A large rectangular area defined by a dashed black line, intended for handwriting practice. The area is mostly empty, with the blue water bottle illustration at the top-left corner.



espada

.....spada

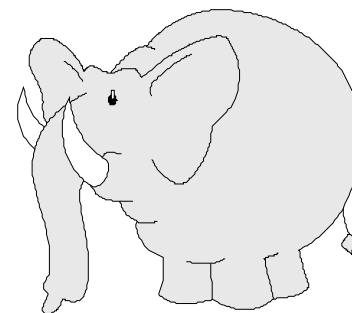
.....sp.....da



escalera

.....scal.....ra

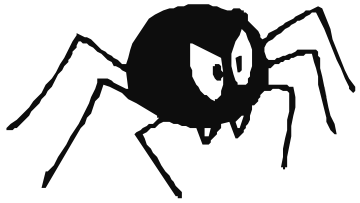
.....scal.....r.....



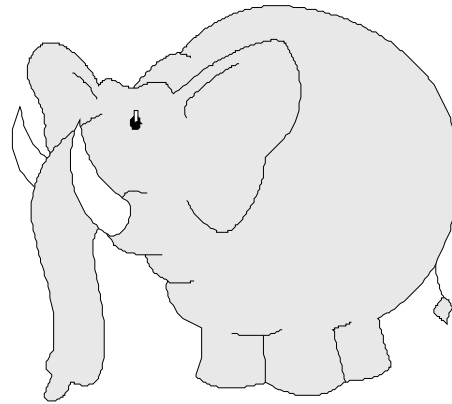
elefante

.....lefant.....

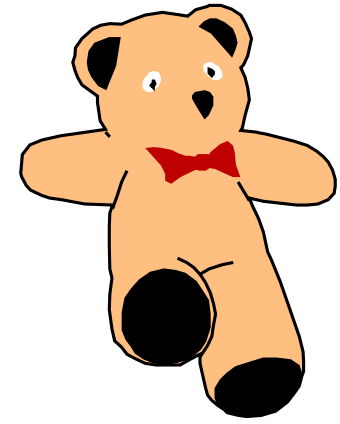
.....l.....fant.....



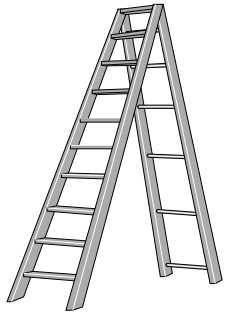
.....r.....ñ.....



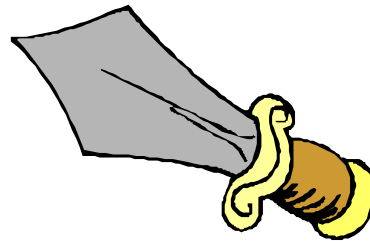
.....l.....fant.....



.....s.....

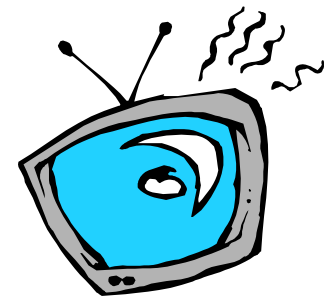


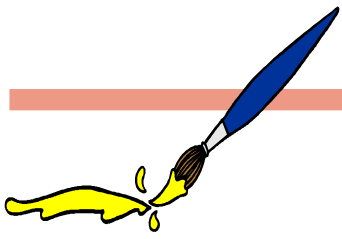
.....scalera



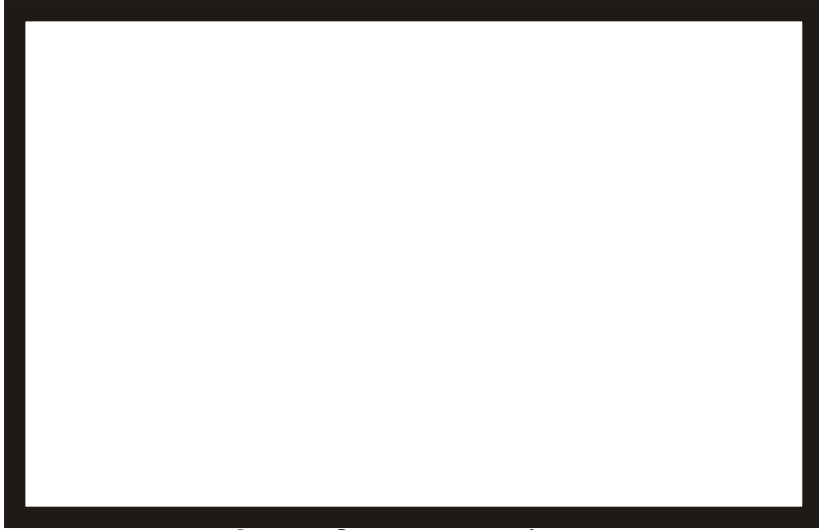
.....spada

t.....l.....

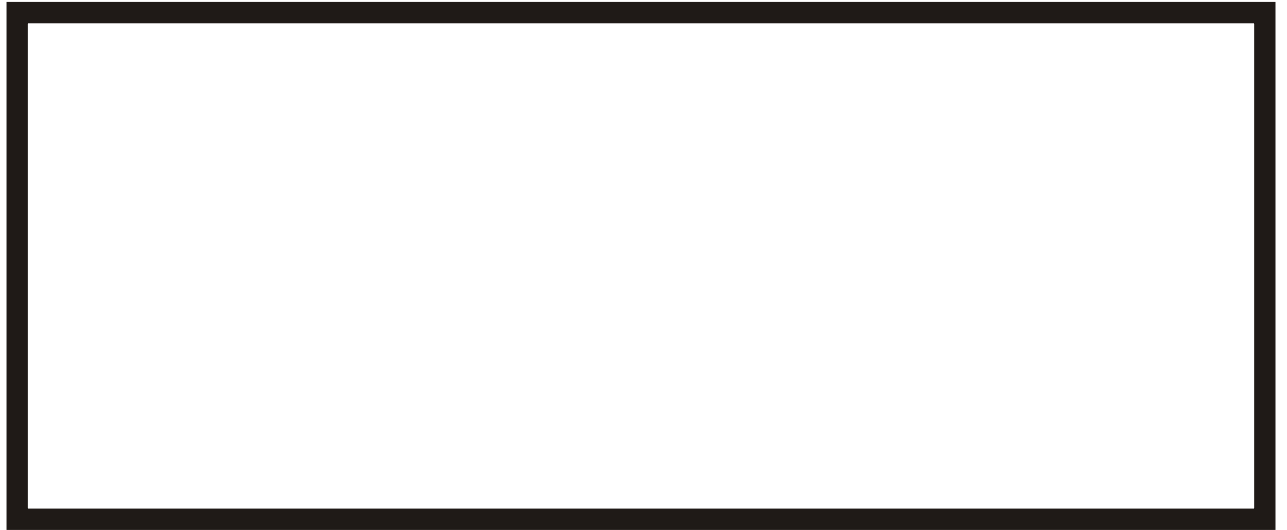




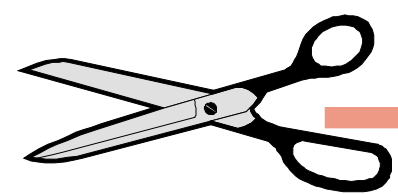
tele



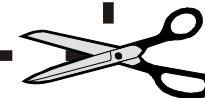
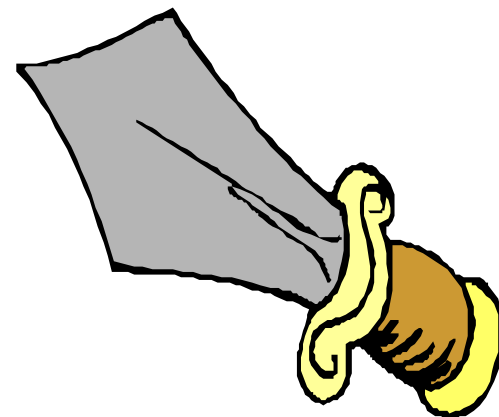
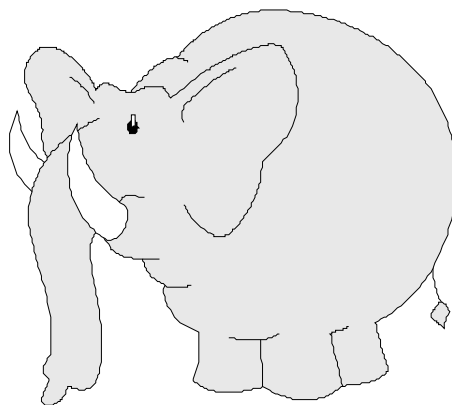
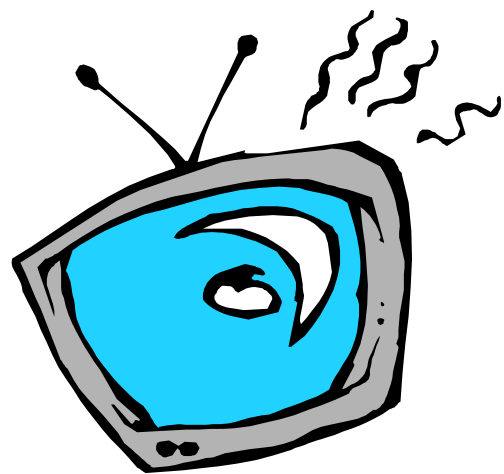
elefante

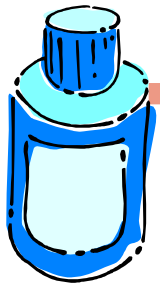


espada



Para recortar y pegar
en la página siguiente





Para pegar los dibujos
de la página anterior

elefante

espada

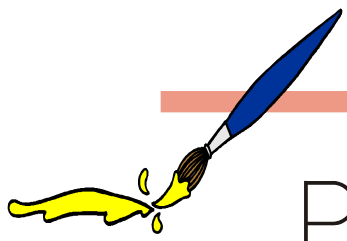
tele

A large rectangular area defined by a dashed line, intended for pasting drawings. The area is divided into three sections by vertical dashed lines, corresponding to the words 'elefante', 'espada', and 'tele' written above it.



e i a e o e

E e U u A a O I



Para colorear

La espada

